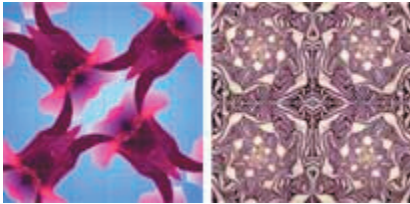


Architonic.com; *Material Research*; 2005

CERAMICS

Architectural ceramics tiles are used since the middle ages in building and design. Their purpose was originally mainly functional in making buildings resistant to weather conditions or to improve hygienic circumstances. For design purposes unglazed terracotta or glazed faience were used to decorate interiors or roofs and facades. Today the traditional advantages of ceramic tiles are rediscovered and newly interpreted by contemporary design: They can be easily personalised and customized, glazed, printed on, painted or three-dimensional formed. A vast range of designs is available in various techniques.



Digitally-Printed Tiles

Digitally printed tiles with a durable matt surface for indoor use in kitchens, bathrooms etc. The images can be pre-designed or customized and scaled to any size. Single overall pictures or patterned mosaic images are both possible. The tiles can be produced from any art & design work, images from photo libraries, computer graphics work or printed material can be combined to create the image. Current standard tile sizes are: 10x10cm, 15x15cm, 20x20cm and 30x30cm.



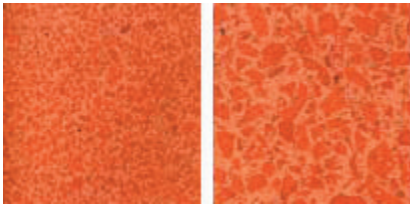
Big-Size Tiles

Porcelain quality ceramic tiles with dimensions of 446mm x 446mm x 10mm. The tiles are produced for indoor and outdoor flooring in the residential and non residential building sectors. The tiles are unglazed and highly resistant to wear. Also glass and steel tiles are available with the same modular measurements.



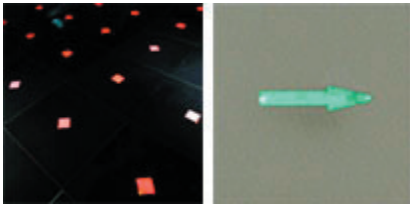
Partly Oxidized Tiles

During the firing of thick terracotta pieces, oxygen does not reach the center. This non-oxidised part, though fired, does not take on the classic hues of terracotta, but preserves the natural grey of the original clay. The listello, which is a vertical cut terracotta element, features a grey surface and a terracotta coloured striping on its edges, revealing the new face of an ancient material.



Cottoslabs

The ancient tradition of „Coccio pesto“ (crushed terracotta) which can be found in the houses of Pompeii and many ancient basilicas is adopted with exceptionally large terracotta slabs measuring a maximum of 120cm x 300cm. Cotto is crushed and bound with special resins and natural quartz to produce this new material. It can be used as cavity walls or as raised floors in a reinforced version.



Glow Tiles

The tiles are lit by a system of glassfibres. Due to their construction height of only 3 mm they can be integrated in a lot of different materials on floor and wall, such as ceramic tiles, wooden flooring or natural stone. The lighting elements can be customized in form and are applicable for indoor and outdoor use.

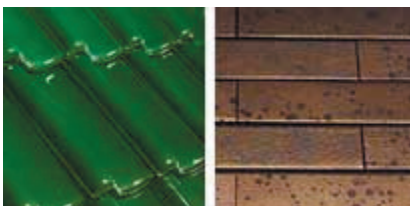


Structured Tiles

The three dimensional wall tiles offer an interesting effect and are available with a matte or glossy surface. They come in 9 different colours. Their size is 10 cm x 40 cm.

Custom-Glazed Tiles

Roof tiles are glazed in the colour required for each individual roof. A new glaze is made for each commission, the tiles are glazed by hand. Bricks and outdoor cladding tiles are treated on a conveyor belt due to larger quantities. The full thick glaze is available in a rich assortment of colours and metallic glazes, besides custom solutions.



Ceramic Laminate

Ceramic laminate with the architectural module 1000x3000 mm and featuring a 3-mm thickness. Its water absorption is almost equal to zero, thus it has complete frost resistance and adaption to all weather and climate conditions. In addition, any surface colour finishing can be applied, it can be polished or satinated, to get gloss or semi-gloss surface depending on the application range. Applications range from wall tiles, partitions, false ceilings, floors to facade ventilated walls and surface finishing.